

**Welcome to
The Attendance Information
Meeting**

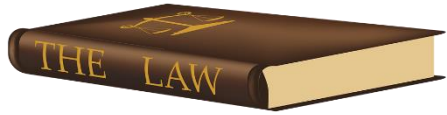
YOUR CHANCE TO SHINE





Every day matters.

- At Hall Green Primary we want every child to have the best start to their education and their futures. We want them to have their chance to shine.
- We expect for every child to attend school every day that it is open.
- If children attend school every day we can support them to be the best that they can be.
- By attending school every day they will not only learn more skills, they will build good friendships, they will have access to lots of support and resources, they will build good relationships with their teachers and they will have fun. Children and their families will also receive rewards for good attendance.
- We would like our children to have 100% school attendance. The minimum we would accept is at least 95% at the end of this academic year.



The Legal Bits

- From September 2023 the new Government White Paper, 'Working Together To Improve School Attendance', came into effect.
- *'The law entitles every child of compulsory school age to an efficient, full-time education suitable to their age, aptitude, and any special educational need they may have. It is the legal responsibility of every parent to make sure their child receives that education either by attendance at a school or by education otherwise than at a school'.*
- In Attendance Law, 'Parent' is used to describe any person who:
 - are natural parents, whether they are married or not;
 - any person who has parental responsibility for a child or young person; and,
 - any person who has care of a child or young person (i.e. lives with and looks after the child).
- Ofsted hold schools to account for their attendance figures and may ask about your child in particular.

Working together to get it right!



- At Hall Green we are dedicated to improving children's attendance in school. We have a team of staff that monitor school attendance and when we see that attendance is falling we do all that we can to make it better.
- If your child is too ill for school it is important that you contact school at the earliest convenience and let us know. Mrs Guttridge and Mrs Bhogal work in the main office and will take calls from parents. We will need to know why your child will be absent from school, if they have a medical appointment for their illness and when they will be returning to school. You may be asked to provide medical evidence for this.
- We ask that any routine appointments such as hospital or dentist, are made outside of school hours or during the school holidays. This will prevent any decline in your child's attendance and any missed learning time.
- Holidays in school time will not be authorised. If you need to request time off school for your child it should only happen in exceptional circumstances and a Leave of Absence Form will need to be completed by a parent prior to taking the time off. This form should then be handed in at the main office.



- If attendance falls and is unauthorised by school, we will notify parents and make them aware of our concerns.
- We will write to you and inform you of your child's levels of absence. We may invite you into school for a meeting to discuss this face to face or we might do a home visit.
- We will offer support and work with you to improve your child's attendance.
- If all of this fails and we see that attendance does not improve despite every effort being made, we will then consider the next steps.





Sandwell Attendance Support Service.

- We have a linked School Attendance Support Officer, Laura Gough. She is based at The Council House in Oldbury
- School are able to speak with Laura and her colleagues at the Local Authority to seek advice and guidance.
- Laura is also able to monitor our school attendance, the LA have access to school's attendance data.
- If a child absence declines and school are concerned we can make a referral to the LA. Once referrals have been submitted the LA will initiate further action. This could be a Penalty Notice (£60 per parent per child), a warning notice or other legal action.
- We have had cases that have been taken to court and parents that have been issued with court orders and large fines.



Lateness.

- Persistent lateness falls into the absence category so punctuality is essential. Please check website for details of pick up and drop off times.
- If your child is late or absent they will miss learning with their peers and will need to catch up individually.
- Children can feel upset or anxious when arriving late, as the school day has already begun.





- Do you know what your child's attendance is?
- Do you know what it means?

?



Example child...

This is Simone. She is in Year 5 and has 90% attendance.

- Is that good?
- What does this mean?





Simone thinks this is pretty good, so do her parents. Are they right?

90% attendance = **½ day missed** every week!!

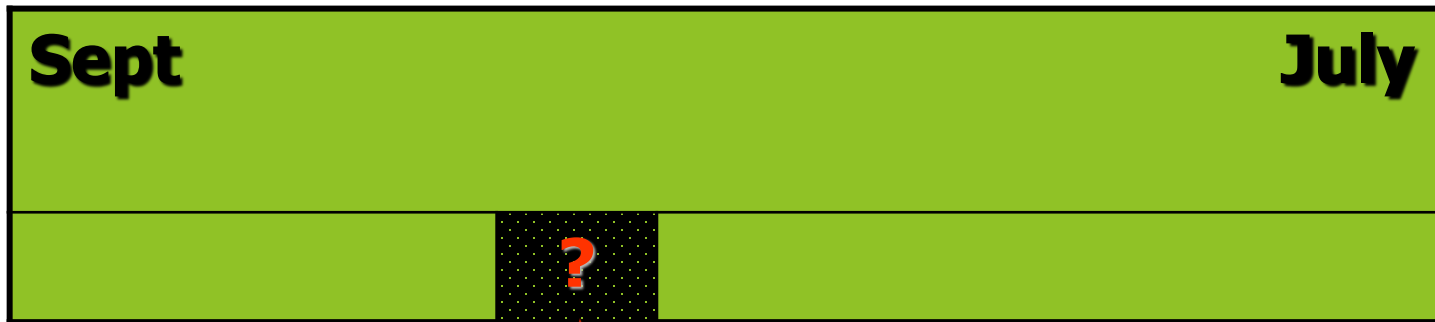


Lets looks a little closer.....



1 school year at **90%** attendance = **4**
whole weeks of lessons **MISSED!!!**

38 school weeks



Absent for 4 weeks



So 90% is **not** as good as it first seemed.

Any child below 90% is classed as a **persistent absentee**.

What can **I** do as a parent to increase my child's attendance?



Ways for parents to encourage attendance:



1. Look at your child's attendance information each term when it is sent home from school.
2. **Talk** regularly with your child about school and how they feel about it. More likely to attend if they feel supported and anxieties **listened** to.
3. **Phone** us as soon as possible to tell us why your child is absent, and when you expect them to return. Do not keep them off for your own illness.
4. Only grant days at home for **genuine** illness. (you will know!!)



Ways for parents to encourage attendance:



6. If you have concerns **ring us** - we will **check** attendance and be discreet.
7. **PRAISE AND REWARD GOOD ATTENDANCE:**
even small successes, e.g. going in promptly,
even when first lesson is their worst!
8. **DO NOT** take holidays in school time. This may
lead to a fixed penalty notice.

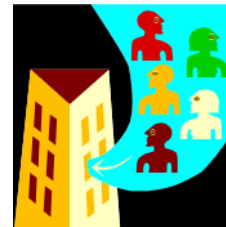


Other tips to help secure good attendance:



Talk to us to **resolve** issues. We may be able to help and support you and your child. You are **not alone**.

Have routines at home including a set bedtime and wake up time. Invest in an alarm clock. Set out uniform the night before.



We expect all children to attend school everyday.



We will work with parents and carers to support families to ensure attendance is in line with expectations.

The schools attendance lead is

Miss Anne Shipley-

anne.shipley@hallgreenprimary.co.uk

Other members of the attendance team are

Mrs Guttridge and Mrs Plose-Joyce

Please do not hesitate to contact us if you have any worries or want to talk about attendance.

The school number is

0121 588 2080