

Welcome to Hall Green Primary School



YOUR CHANCE TO SHINE

Y1 Transition Meeting 04.10.23



School Leadership



Mrs Gilbert

Head Teacher



Mrs MacDiarmid

Interim
Deputy Head



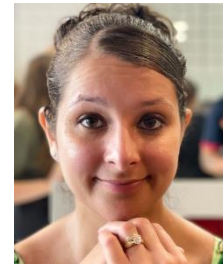
Mrs Paddock

Safeguarding &
Attendance
Officer



Y1 Staff

- The children are in two registration classes: **Mrs Marok** (IM) and **Mr Falconer** (IF). **Mrs Dicken** is also in our teaching team.



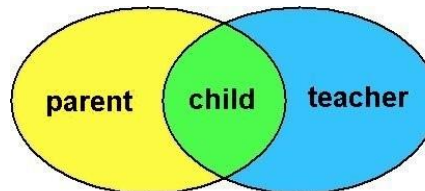
- Miss Carter, Mrs Cheshire, Mrs Payton, Mrs Thear** support learning in our team.
- We build up to children learning with different members of staff during the day for different lessons.



A message from our Parent Partnership Team



- We welcome you on this next stage in your child's learning journey. We look forward to working with you to enhance the relationships between home and school which can lead to happy and successful children.
- Throughout the year ahead, we hope to continue to welcome you back into school to share learning experiences and progress meetings as we work closely together for your child. We may ask you for your feedback to help us to see how effective our provision is in your eyes.
- We would like to know constructively how, we could improve our provision for you or any aspect of school life. If you feel that we could run workshops to help learning at home or point you in the direction of developing your own learning skills, we aim to assist you in any way we can.
- Please look out for updates on the school's website or the newsletter.
- At any time, please speak to your child's class teacher, or Mrs Dicken (YI).
- Any written suggestions can also be dropped at the post box in the school's reception.



Safeguarding



At Hall Green Primary School; the health, safety and well-being of our children is of paramount concern to us.

Our aim is for children to enjoy their time as pupils in our school. We want to work in partnership with you to help your child achieve their full potential and make a positive contribution to the world they will be part of in the future.



Our School Aims & Values

The aims of the school are the same for all pupils within a caring, positive, disciplined and safe environment and in partnership with parents and governors.

Resilience

Perseverance

Courage



Respect

Tolerance

Kindness

Empathy

Co-operation

Collaboration

H
O
N
R E S I L I E N C E
S
T
Y
O
W
E
R E S P E C T
S
H
I
P

Honesty

Trustworthiness

Integrity



Ownership

Responsibility

Independence


Accountability



Behaviour & Discipline Policy



At Hall Green Primary School, discipline is recognised to be a collective responsibility between parents, staff, governing body, children and other agencies involved with school. It is vital that staff, parents and pupils understand it clearly and that it is consistently applied.

| Rewards | Consequences |
|---|--|
| <ul style="list-style-type: none">• Verbal praise• Stickers that earn prizes• Reading at home stickers and prizes• House points• Pupil of the week• Values child of the week | <ul style="list-style-type: none">• Traffic light system• 'Sad Chair' timeout with timer• Teacher/child reflection with Mrs Gilbert.  |



School Times



Children are to arrive through the Y1 door from 8:45a.m. This door closes at 9:00a.m. If you arrive after this time, please go to Y3/4 door by the hall. Late marks are given after 9:05a.m.

Our day

Morning session: 8:45 a.m. – 12:00 p.m.

Afternoon session: 1.00 p.m. – 3.25 p.m.

If your child is late or absent they will miss sessions, it could disrupt their settling in and mixing with friends. Having a regular attendance will help to give your child the best start in life. **Your child's attendance should never fall below 90%.**

Leaving & Collecting Your Child

Leaving your child

It can be upsetting and very worrying, for children and adults. *We understand.*

- Leave your child confidently with a smile at the door.
- Always tell your child you are leaving.
- Tell your child you will always come back for them.
- Always be on time to pick them up.
- Make sure your child knows if someone different is collecting.
- Please do not stand at the windows waving goodbye as this can cause upset.



Collecting your child

- Please collect your child on time, they can get very upset if you are not there to meet them.
- If somebody else is picking your child up please let us know.





School Uniform



- We have a school uniform, which we think is very smart and practical not to mention economical. We may have some pre-loved uniform if you would find this useful.
- **Please label all uniform items** clearly with your child's name in marker pen. That way if clothes are lost they can be found easily in lost property. We ask children to put their jumpers into their tray.
- We cannot be held responsible for items which go missing, but we can find clothing more easily if it is named clearly.



Further Information



Milk and Fruit

- Milk is available for you to buy online. If you would like your child to drink milk you will need to complete an order form and send it off or apply online.
- Children will receive a free piece of fruit and a drink of water.
- We recommend that your child brings a **labelled** water bottle everyday.

YI Fund

- This is 50 pence a week collected weekly which pays for extra snack items and cooking ingredients. Any surplus money is used to fund activities to enrich the curriculum.





Keeping in touch



- Look out for the school calendar and newsletters so that you are aware of key school dates.
- The school also operates a text message service; so please make sure your mobile number is up to date.
- If your child is ill or has an appointment please ensure you inform our school office. It is important even at this early stage your child regularly attends school.

*If your child is late or absent they will miss sessions, it could disrupt their settling in and mixing with friends. Having a regular attendance will help to give your child the best start in life. **Your child's attendance should never fall below 90%.***



Days to remember



- **Mondays** — please can you bring in 50p for biscuit fund.
- **Wednesdays** — please come dressed ready for P.E.
Remember that children will wear these clothes out to play and lunch.
- 'Books to Share' can be returned **any day but please also bring on Wednesdays for record reward day.**
- 'Books to Read' will be set **weekly** online. We will be sending home books too. Due back **Mondays.**





Our Year 1 learning approach

We have adopted a continuous provision approach this year to meet the needs of our children and to ensure a smoother transition.

Our planning is based upon the children's needs and assessment information from reception.

We follow our school LTP for English and Maths. Children have a whole class teacher input and we then work with small groups of children allowing us to tailor each activity to the children's needs

This term we have a heavy focus on developing children gross and fine motor skills.

For our children to become independent learners we encourage them to 'choose their own learning'. They have opportunities to select their own activity allowing adults to engage in high quality interaction with them to develop language and learning.



Our timetable



| Year 1 2022-2023 | | | | | | | | | | | | | |
|------------------|--|--------------|-----------------|--|--|-------------|------------|--------------------------|----------------------|--|---|--|--|
| 845 | | 855 - 905 | 9:05 - 11:35 | | | 11:35-12:00 | 12:00-1:00 | 1:00-1:05 1:05 - 1:25 | | 1:25-1:45 | 1:45 - 3:00 | 3:00 - 3:15 | |
| M | | Registration | Lightning Maths | English and CP Direct teaching-whole class Focus adult led task-groups | | Phonics | LUNCH | Registration | Reading LW read 1 | Maths and CP Direct teaching-whole class Focus adult led task-groups | | PSHE- circle time | |
| T | | Registration | Lightning Maths | English and CP Direct teaching-whole class Focus adult led task-groups | | Phonics | LUNCH | Registration | Phonics | Maths and CP Direct teaching-whole class Focus adult led task-groups | | Class story/ collective worship | |
| W | | Registration | Assembly | Lightning Maths | Maths and CP Direct teaching-whole class Focus adult led task-groups | | Phonics | LUNCH | Registration | Music & PPA Mrs <u>Elcock</u> & Mr <u>Turton</u> | | | |
| Th | | Registration | Assembly | Lightning Maths | English and CP Direct teaching-whole class Focus adult led task-groups | | Phonics | LUNCH | Registration | Reading LW read 2 | Topic and CP <i>Year 1 & 2 Sunshine Room</i> | | Class story/ collective worship |
| F | | Registration | Assembly | Lightning Maths | Science and CP | | | LUNCH | Registration | Reading LW read 3 | Computing/RE and CP (alternate weeks in each class) | | Class story/ collective worship |



Curriculum Areas



Year 1 is the start of **Key Stage 1** and therefore the **National Curriculum** will be introduced.

This comprises of the following areas:



English

Maths

Science

Computing

RE

PE

Geography

History

Art & Design

Music

Design Technology

PSHE



Our Y1 Learning Plan

| Aut 1 | | | | | | | | Aut 2 | | | | | | | Spr1 | | | | | Spr 2 | | | | | Sum1 | | | | | | | Sum 2 | | | | | | | | | |
|--|-----------|---|-------------------------------------|--------------------------------------|---|---|---|--|-----------|---|---------|--|---------------------------|-----------------------|---------------------------|---|------------------------------------|-----------------------------------|--------------------------|---|-------------------------|-----------------------|------------------------------|--|---------------|---|---|-----------|---------------------------------------|---------------------------------|-----------------------|-----------|----------------------|------------------------------|---|---------------|----------------|-----------------|----------------|------------------|---------------|
| 1 | 2 | 3 | 4 | 5 | 6 | 7 | 8 | 1 | 2 | 3 | 4 | 5 | 6 | 7 | 1 | 2 | 3 | 4 | 5 | 1 | 2 | 3 | 4 | 5 | 6 | 7 | 1 | 2 | 3 | 4 | 5 | 6 | 7 | | | | | | | | |
| Basic Skills | NPV to 10 | | Calculation: Addition & Subtraction | | | | | Geometry: Per. & Div. | NPV to 20 | | | Calc: add & sub within 20 | | Review | Calc: add & sub within 20 | | Geometry: shapes & patterns | | Measure: Length & Height | | Assess & Review | Review and Remendable | | NPV to 40 | | | Calculation: addition & subtraction | | Calculation: Multiplication | | Calculation: Division | Fractions | NPV to 100 | | | Measure: Time | Measure: Money | Measure: Volume | Measure: Mass | Geom. Div. & spa | Review Assess |
| | | | | | | | | | | | | | | | | | | | | | | | | | | | | | | | | | | | | | | | | | |
| | | | | | | | | | | | | | | | | | | | | | | | | | | | | | | | | | | | | | | | | | |
| | | | | | | | | | | | | | | | | | | | | | | | | | | | | | | | | | | | | | | | | | |
| | | | | | | | | | | | | | | | | | | | | | | | | | | | | | | | | | | | | | | | | | |
| | | | | | | | | | | | | | | | | | | | | | | | | | | | | | | | | | | | | | | | | | |
| | | | | | | | | | | | | | | | | | | | | | | | | | | | | | | | | | | | | | | | | | |
| | | | | | | | | | | | | | | | | | | | | | | | | | | | | | | | | | | | | | | | | | |
| | | | | | | | | | | | | | | | | | | | | | | | | | | | | | | | | | | | | | | | | | |
| Now & Then (7 lessons) | | | | Mechanisms - Cards 4 lessons | | | | There's no place like home (7 lessons) | | | | | | Fruit salad 4 lessons | | | | The lady and the lamp (7 lessons) | | | | | Finger Puppets 3 lessons | | | Icy igloos vs boiling burrows (7 lessons) | | | | | | | | | | | | | | | |
| I'm a survivor (8 lessons) | | | | | | | | Would a tiger really come to tea? (12 lessons) Seasons lesson start of A2 and Spl | | | | | | | | | | | | | | | | The Gruffalo's garden (12 lessons) Seasons lesson start of Sp2 and Sum2 | | | | | | | | | | Outdoor learning (7 lessons) | | | | | | | |
| Music-Hip Hop | | | | | | | | Art – Sculpture/Printing | | | | | | Art- Painting | | | | | | Music-Recorders | | | | | Art- Textiles | | | | | | Music-Pop | | | | | | | | | | |
| Character and Setting Descriptions (4+4) | | | | | | | | Instructions (4) | | | | Diary (3) | | | Shape poetry (2) | | Character description (3) | | | | Setting description (2) | | Non-Chronological Report (3) | | | Acrostic Poetry (3) | | Diary (4) | | | | | Simple Stories (3+4) | | | | | | | | |
| *Beegu | | | | | | | | *Stories with Familiar Settings | | | | | | | | *The Tiger Who Came To Tea | | | | | | | | * The Gruffalo | | | | | *Smile out loud * Chocolate Cake | | | | | | * Lost and Found | | | | | | |
| Fundamental movement skills (4) | | | | Ball Skills(4) | | | | Invasion games – playground games | | | | | | | | Dance and gymnastics | | | | | | | | Health and fitness | | | | | Striking and fielding- strike it ball | | | | | | Athletics (4) | | | | Team games (3) | | |
| I.1 What do Christians believe God is like? | | | | | | | | I.2 Why does Christmas matter to Christians? How and why do we celebrate special times? | | | | | | | | I.7 What can we learn from stories of the Prophet? | | | | | | | | I.6 Why does Easter Matter to Christians | | | | | I.4 Stories of the Sikh Gurus | | | | | | I.5 Why si there a kitchen at the Gurwara? | | | | | | |
| Y1 - Physical Health and mental well-being (4 lessons) | | | | Y1- Growing and changing (4 lessons) | | | | Y1 - Keeping Safe (4 lessons) | | | Revisit | Y1- Families and friendships (4 lessons) | | | | | Y1- Safe relationships (4 lessons) | | | Y1- Respecting ourselves and others (4 lessons) | | | Revisit | Y1- Belonging to a community (4 lessons) | | | Y1 - Media Literacy and digital resiliences (4 lessons) | | | Y1 - Money and Work (4 lessons) | | | Revisit | | | | | | | | |
| Online safety (8 lessons) | | | | Card designers (7 lessons) | | | | Programmers A (5 lessons) | | | | | Programmers B (6 lessons) | | | | | Authors (13 lessons) | | | | | | | | | | | | | | | | | | | | | | | |



National Phonics Screening

- On the week of Monday 10th June 2024, all Y1 children across the country complete a National Phonics Screening assessment.
- We will have a separate Phonics Screening meeting in Spring.

Reading Books – Little Wandle

- All reading books need to be fully decodable so we have had major changes to our reading scheme.
- Access to online decodable books is being sorted for each child and a book to bring home.
- A labelled ‘Book to share’ will come home weekly. This is to read together.



Helping at home...



- Encouraging independence skills e.g. zips on coats, buttons, taking jumpers off etc.
- Counting forwards and backwards to 20, 50 then 100.
- Reading and sharing stories everyday. Stone Cross Library has free holiday events on. Children are allowed 30 books on their ticket.



Thank
You



We greatly look forward to working together with you.

If you have any further questions after today, please
come and speak to us or email:

year1@hallgreenprimary.co.uk